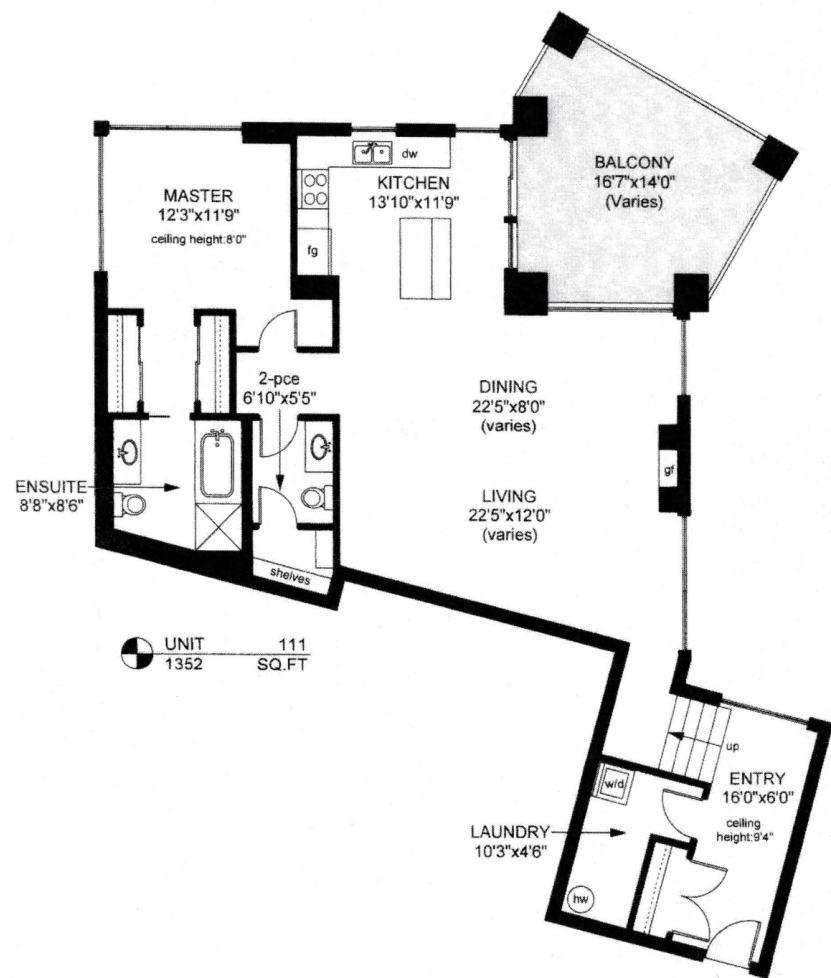
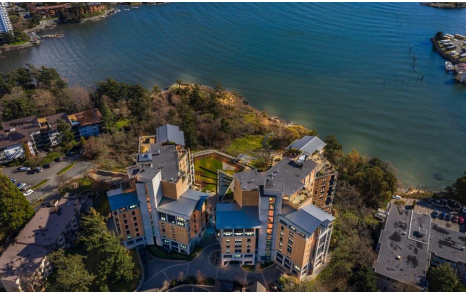
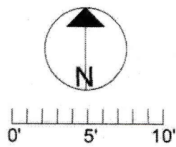


111 - 845 DUNSMUIR ROAD



| | FINISHED SQ. FT. | UNFINISHED SQ. FT. | TOTAL SQ. FT. |
|----------|---------------------|-----------------------|------------------|
| UNIT 111 | 1352 | 0 | 1352 |
| TOTAL | 1352 | 0 | 1352 |
| PATIO | 0 | 211 | 211 |



845 Dunsmuir Rd # 111

LIST PRICE \$799000

SWALLOWS LANDING! This envied address is widely thought to be one of the best condo buildings in Victoria. This suite offers an unusually spacious layout with over 1350 SF of living area. It's one bedroom but don't miss it for that reason. (One of the 2 Guest suites is directly across the hall). It's huge by most standards. The bedroom has a wonderful ensuite bath and there's a 2 pce powder room as well. This unique floor plan boasts a gracious entryway (also an office area) separated from the Living room by a few steps up. It isn't on the ground floor but you can avoid the elevator if you like and walk up the lobby stairs to access. Also right across the hall, is the Common area lounge, which is a very handy & comfy place to sit by the fire with a book. The huge covered balcony





Features:

| | | | |
|------------------|---------|----------------------|-----------------|
| Price: | 799,000 | Sub-area: | Walk to Downtov |
| MLS® #: | 933235 | Total Floor Area: | 1351 |
| Bedrooms: | 1 | Lot Size (Width): | n/a |
| Bathrooms: | | Lot Size (Length): | n/a |
| Year Built: | 2007 | Total Lot Size (sf): | n/a |
| Gross Taxes: | 3293.38 | | |
| Maint. Fee Incl: | n/a | | |

